

---

## MT40 Datasheet - Smart Power Controller

---

### Overview

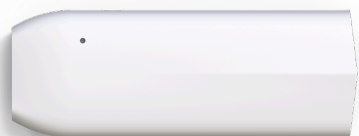
The Cisco Meraki MT40 smart power controller is the latest addition to the MT sensor portfolio. MT40, combined with the rest of the MT family, provides remote visibility into physical conditions and equipment status and power consumption to minimize unplanned downtime, extend equipment lifespan, and benchmark energy usage to quantify sustainability initiatives.

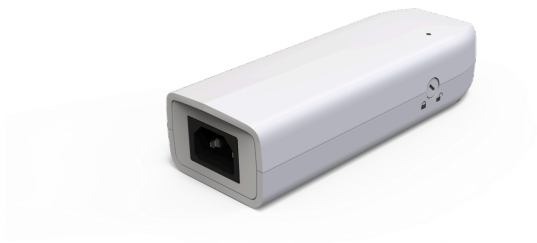
MT40, an inline power monitor, provides insight into power usage, intelligent alerting, and remote control of power status to improve sustainability, speed troubleshooting in remote deployments and streamline operations by enabling a more efficient response to power outages.

---

### Smart sensors. Smarter businesses

Meraki MT sensors accelerate deployment, simplify management, and provide data-driven business outcomes. Wire-free installation, flexible mounting options, and automatic pairing make it easy to provision thousands of sensors in a short amount of time. Centralized cloud management and open APIs enable MT sensors to be managed alongside other networked devices or integrated with any business system.





---

## Product Highlights

- Inline power monitor
- Downstream Power control
- Single pane of glass for sensor monitoring combined with your existing Meraki dashboard
- Always-on, real-time visibility (24/7/365 visibility)
- Flexible alerts via email, SMS, mobile push notifications and Webhooks
- Simple to set up reporting and configuration
- Data mining APIs for custom development and integrations.
- **Multiple installation options**
- Provision multiple sensors in minutes

---

## Technical Specifications

---

### Sensors

#### Power Monitoring

RMS Voltage	Range: 250 V
	Accuracy: +/- 1% V
RMS Current	Range:
	100-120VAC, 50-60Hz, 12A max

200-240VAC, 50-60Hz, 10A max

Accuracy:

+/- 1% A

Real Power

Range: up to 2400 W

Accuracy: +/- 1% W

Apparent Power

Range: 0 - 2500 VA

Accuracy: +/- 1% VA

Power Factor

Range: 0 - 100%

Accuracy: +/- 1%

Energy

Range: up to 144 kWh

Accuracy: +/- 1%

---

## Wireless Capabilities

Bluetooth® Low Energy [Compatible MV smart cameras and MR access points](#)

Operating Frequency 2.400–2.4835 GHz

IEEE Standard 802.15.1 (BLE 4.2)

---

## Data Logging

Data sampling	All metrics are polled at 15 seconds Data reporting to gateway: 20 minute interval, threshold violation or on demand
Security	Secure BLE messaging using LTK (Long-Term Key)

---

## Physical Characteristics

Dimensions	161 (L) x 59.5 (W) x 40.7 (H) mm
Operating Environment	<b>Temperature:</b> 0°C - 50°C (32F - 122F) <b>Relative Humidity:</b> 0 - 95 % RH
Power Consumption	<b>Typical:</b> 1.2W (110V) - 1.6W (240V) <b>Maximum:</b> 2W
Hardware	Multicolor, multifunction status LED General purpose button Remote Control Lockout switch Reset button

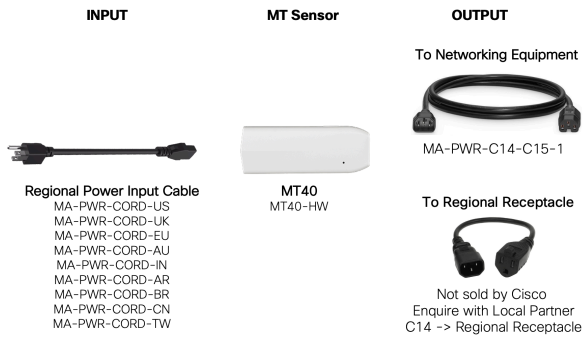
---

## Ordering Information

MT40-HW	Meraki Smart Power Controller
LIC-MT-XYR	Meraki MT Enterprise License (X = 1, 3, 5)
Accessories	Power Cables (Sold Separately):

MA-PWR-C14-C15-1

MA-PWR-CORD-XX (Country specific)



---

## In the Box

Unit	MT40-HW
Guides	QIGs
Mounting equipment	Backplate, Velcro Strap, 2 mounting screws, 2 drywall anchors, C13 and C14 retention sleeves